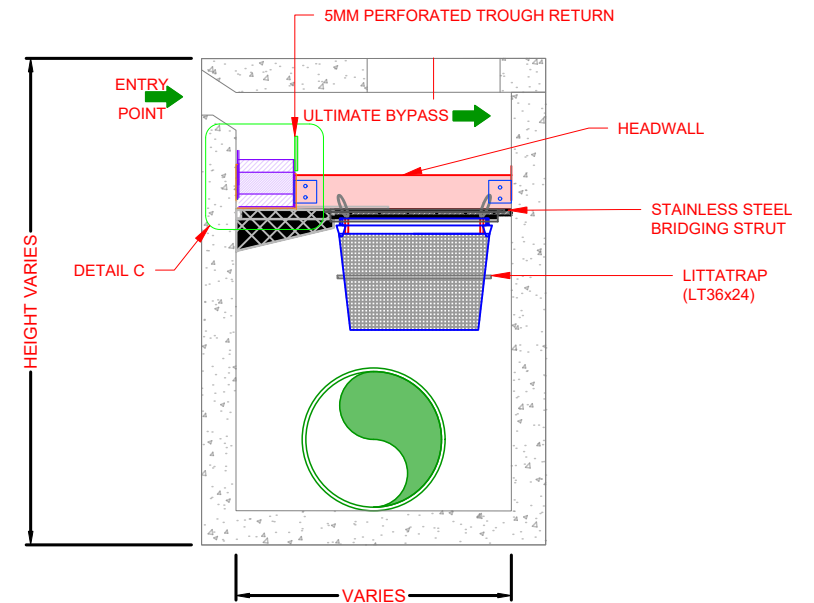
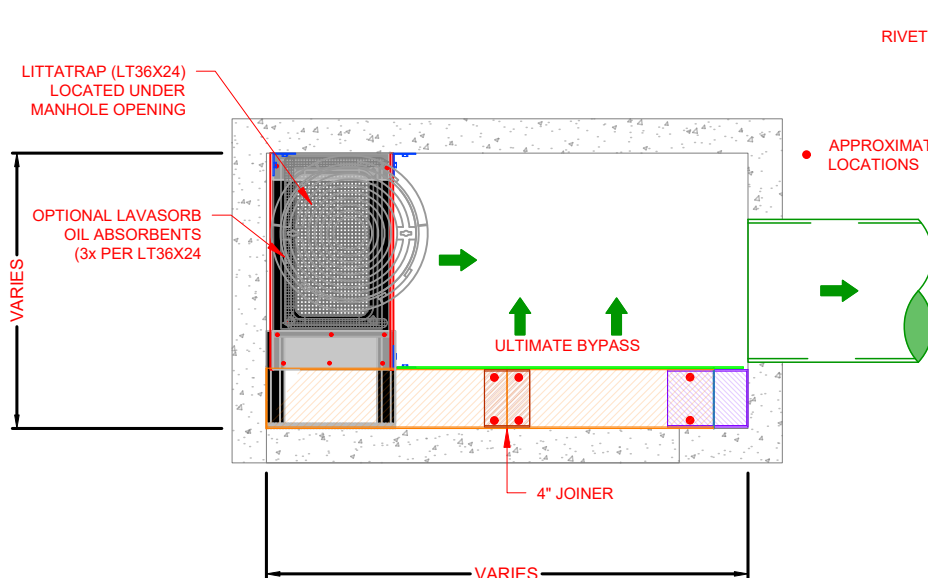


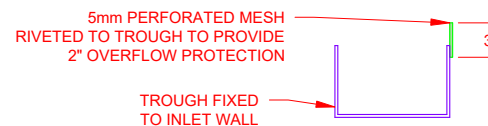
**SECTION A-A**



**SECTION B-B**



**PLAN VIEW**



**DETAIL C**

**ENVIROPOD EASY MAINTENANCE MANHOLE ACCESS (EMMA) CURB ENTRY LITTATRAP FLOW AND STORAGE SPECIFICATION**

LITTATRAP EMMA KIT NAME	CURB ENTRY CATCH BASIN LENGTH (FEET)	LittaTrap FC MODEL	MAXIMUM TRASH CAPTURE VOLUME (MTCV)	LITTATRAP DESIGN FLOW RATE (50% MTCV) CFS	CHANNEL MAX FLOW RATE CFS	BASKET BYPASS FLOW RATE CFS	TROUGH BYPASS (200% SAFETY FACTOR) CFS
Fiberglass EMMA kit - LT9060	3'+	LTFC9060	3.0	4.8	3.2	4.5	3.4 + 0.55 per ft

The Enviropod LittaTrap™ flow rates listed are for a factory set bypass. Please contact Enviropod for specific bypass requirements.

Trough bypass is based on minimum 3' EMMA kit and has additional bypass capacity per each added foot of trough, and is based on 150mm height above the trough and assumes no restriction in structure inlets/outlets.

The Enviropod LittaTrap™ shall not block the view of the outlet pipe for easy mosquito vector access.