



ENVIROPOD™

A STORMWATER360™ COMPANY

LittaTrap™ Installation Checklist

The following installation checklist ensures the correct installation of the EnviroPod® LittaTrap™ catch basin filter products. Please complete each step with each installation of the EnviroPod® LittaTrap™ products.

Installation Steps	Complete (Y/N)
1. The catch basin is clean and free of trash and debris.	
2. The support bracket is installed 200mm (7 7/8") below the top of the grate and level and below any curb entries.	
3. Anchor bolts are tightened secure and firmly support the bracket.	
4. Filter box positioned so the gross pollutant basket can easily be removed.	
5. Basket is the correct size for the clear opening of the catch basin grate.	
6. Seals are securely fastened to filter box and support bracket (if appropriate).	
7. Seals must not overhang the filter box or the basket will not seat properly. Seals must but up to lip at edge of filter box	
8. Seals extend to walls of the catch basin and need to fall towards the basket.	
9. If Extension seals span further than 8", ensure they are mechanically fixed to the wall of the catch basin.	
10. The basket and liner is placed in the filter basket, with the top flaps passed through the overflow bypass slots and buckled below corner posts.	
11. Check for gaps greater than 5 mm.	
12. Take photos of the installed unit with GPS location services on to send to us at warranty@enviropod.com . Photos must be sent to EnviroPod™ at time of installation to receive the 8 year warranty.	
13. All materials cleared from installation and site is left tidy.	
14. Grate closed.	

INSTALLATION BEST PRACTICE

LINER INSTALLATION



Correct attachment

Liner is folded through the overflow bypass, buckle is below corner post.



Blocking overflow bypass

This liner was installed over the basket collar, blocking the overflow bypass, which could cause flooding in a significant rain event.



OFFSET



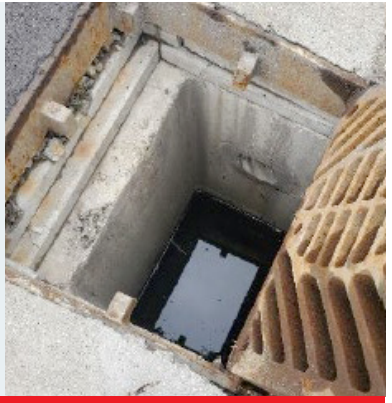
Acceptable offset

The catch basin offset, if any, does not hinder LittaTrap™ installation or removal of the basket for maintenance.



Excessive offset

Basket would be difficult or impossible to remove once full.



COMBO INLET



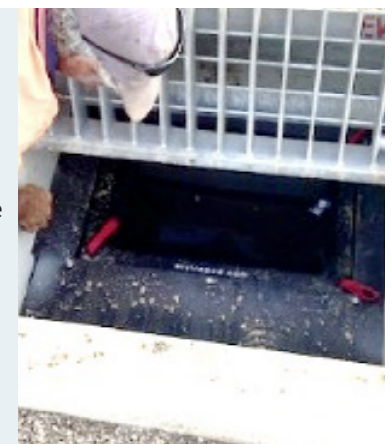
Correct orientation

LittaTrap™ correctly installed in combo inlet. The LittaTrap™ is installed near the roadside, directly under the clear opening for easy basket access.



Incorrect orientation

LittaTrap™ under the wrong part of combo inlet. When the basket is full the crossbar will block it in, meaning most of the material will have to be removed by hand/vactor truck before the basket can be removed.



Scan here to learn more.