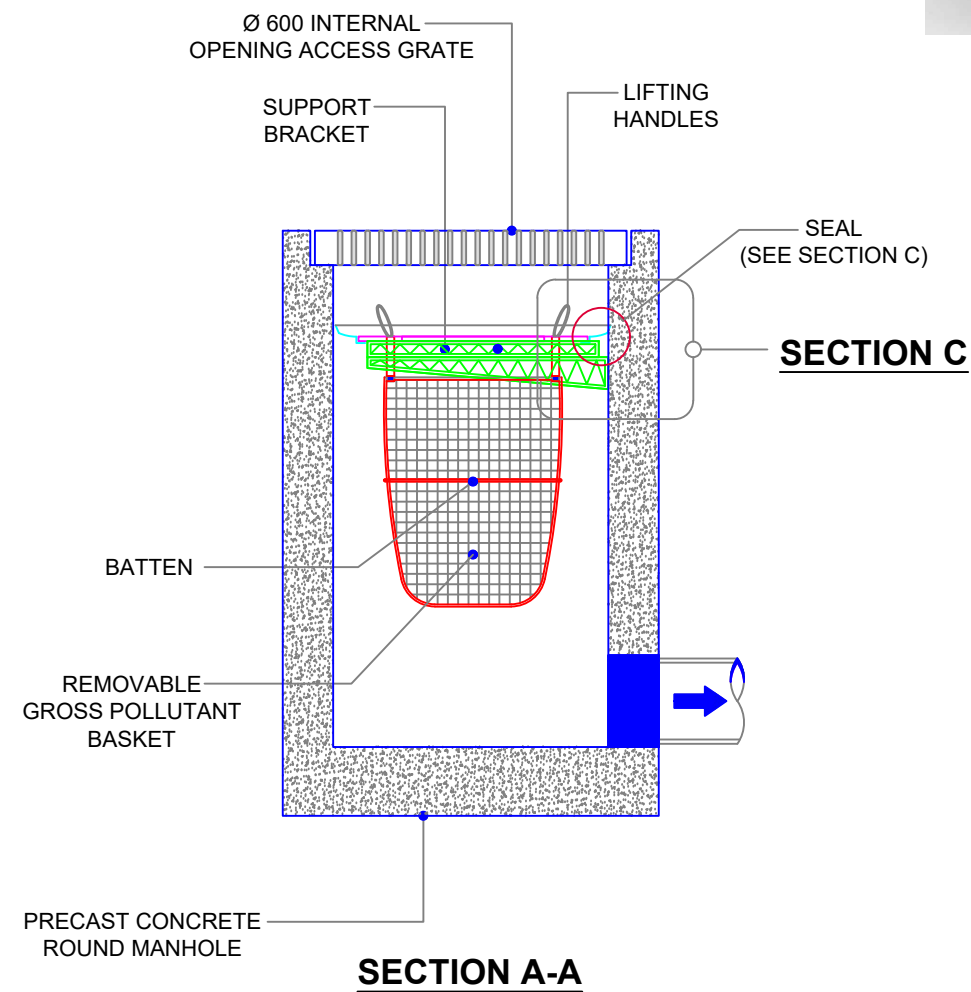


PLAN VIEW

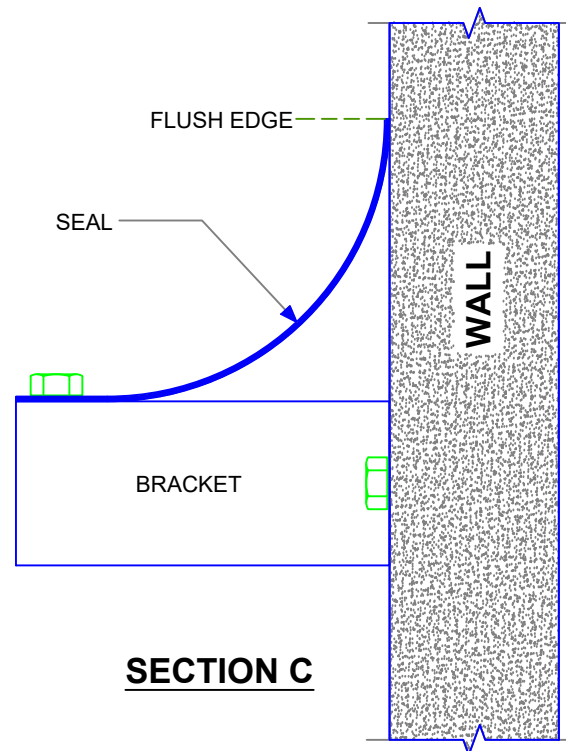
COVER AND FRAME
OMITTED FOR CLARITY



**ENVIROPOD LITTATRAP™
ROUND MANHOLE**



SECTION A-A



SECTION C

ENVIROPOD LITTATRAP™ COMPONENTS

ENVIROPOD LittaTrap™ MODELS AND SIZES

LittaTrap™ Model Size (inch)	LittaTrap Model	Bracket Width (inch)	Min Filter Box Size (Without Seals)		Max Filter Box Size (With Seals)		Basket Collar Size		Basket Depth (inch)
			Length (inch)	Width (inch)	Length (inch)	Width (inch)	Length (inch)	Width (inch)	
18 x 18	LT4545	17.1	15.4	15.4	20.6	20.6	12.0	12.0	15.7
24 x 24	LT6060	22.4	20.2	20.2	25.3	25.3	17.3	17.3	15.7

ENVIROPOD LittaTrap™ ROUND MANHOLE FLOW AND STORAGE SPECIFICATION

Catch Basin Diameter (Inch)	LittaTrap Model Size	Screen Area in²	Maximum Trash Capture Volume (MCTV) ft³	Design Flow Rate 50% MCTV CFS	Standard Bypass Flow CFS
24" - 27"	LT4545	601	0.7	2.1	2.1
36"	LT6060	969	1.3	3.2	3.3
48"	LT6060	969	1.3	3.2	3.3

The Enviropod LittaTrap™ has an adjustable bypass. Flow rates listed are for a factor set bypass. Please contact Enviropod for specific bypass requirements.

THE Enviropod® may be protected by one of the following Canadian, USA or International patent numbers and has other patents pending :
2,810,974, 13/824,376, 15/459,964, 2011302712, 588049

PATENT No.



**ENVIROPOD LittaTrap™
ROUND MANHOLE
GENERIC DRAWING
(IMPERIAL UNITS)**

DRG No :

ENV-LT-RD-MANHOLE

REV : A

DATE : 09.12.21

JOB NO :

PROJECT :

DRN :

R.P.

09.12.21

CKD :

BVL

09.12.21

REV

A

REVISION DETAIL

FIRST ISSUE

DATE

09.12.21