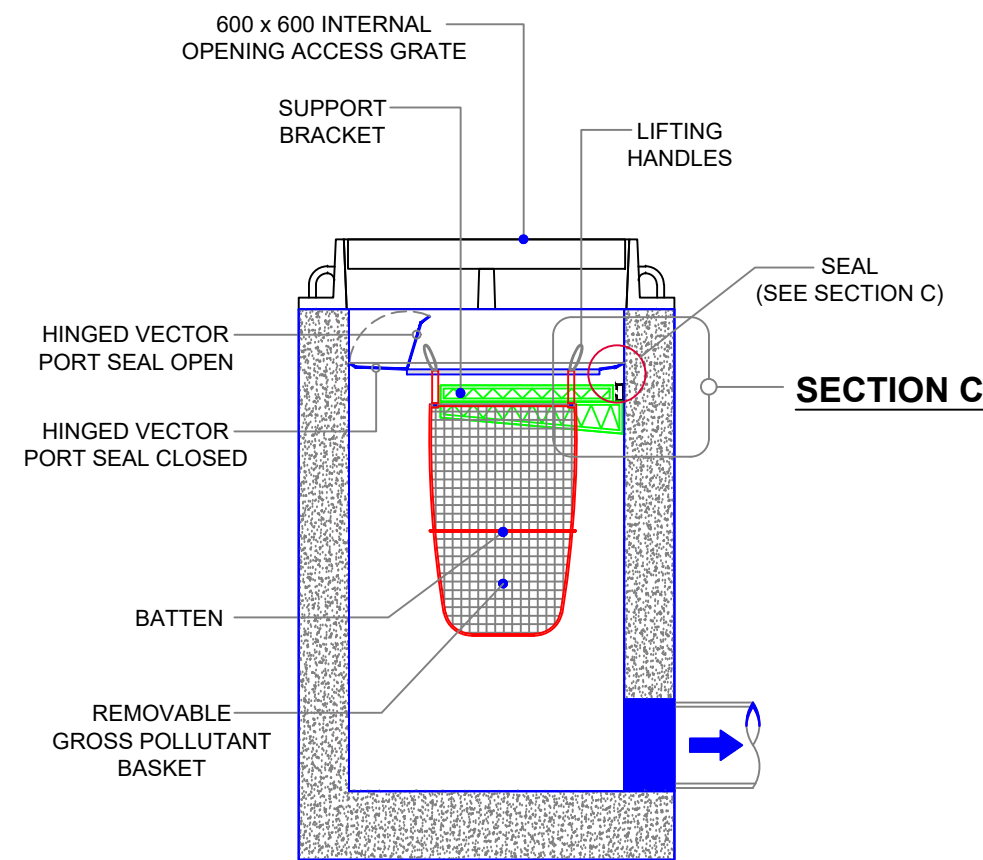
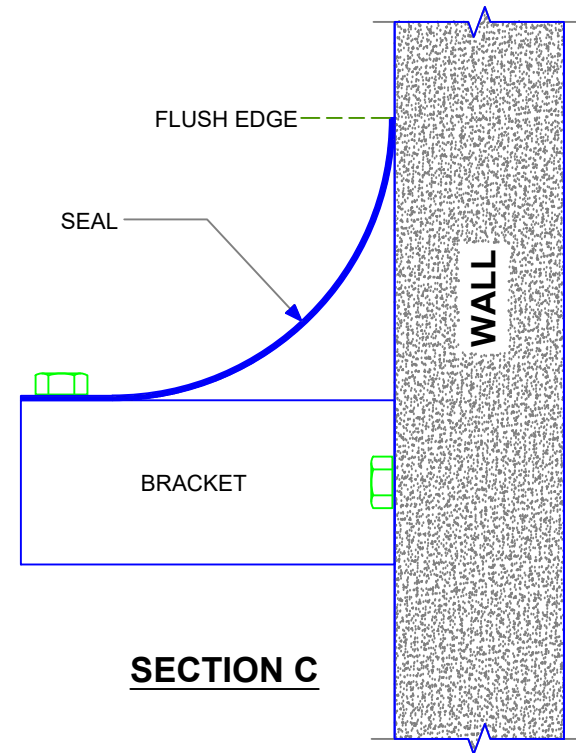


PLAN VIEW

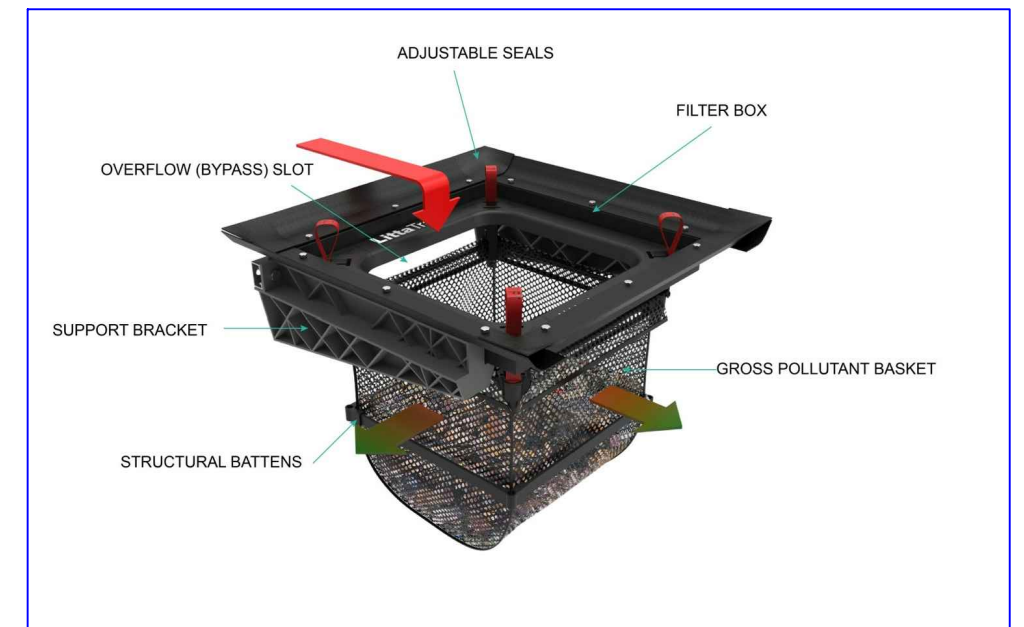


SECTION A-A



SECTION C

ENVIROPOD LITTATRAP™ FC COMPONENTS



ENVIROPOD Littatrap™ FC MODELS AND SIZES

Nominal Catch Basin Size (inch)	Littatrap FC Model Size	Bracket Width (inch)	Min Filter Box Size (Without Seals)		Max Filter Box Size (With Seals)		Basket Collar Size		Basket Depth (inch)
			Length (inch)	Width (inch)	Length (inch)	Width (inch)	Length (inch)	Width (inch)	
18 x 18	LTFC4545	17.1	15.4	15.4	20.6	20.6	12.0	12.0	15.7
24 x 24	LTFC6060	22.4	20.2	20.2	25.3	25.3	17.3	17.3	15.7
36 x 24	LTFC9060	34.3	32.0	20.2	37.1	25.3	29.1	17.3	15.7

ENVIROPOD Littatrap™ FC FLOW AND STORAGE SPECIFICATION

Basin Size (Inch)	Littatrap FC Model SIZE	Screen Area in ²	Maximum Trash Capture Volume (MCTV) - ft ³	Design Flow Rate 50% MCTV CFS	Standard Bypass Flow CFS
18 x 18	LTFC4545	601	0.7	2.1	2.1
24 x 24	LTFC6060	969	1.6	3.2	3.3
36 x 18	2 x LTFC4545 *	1203	1.4	4.2	4.2
36 x 24	LTFC9060	1473	3.0	4.8	4.5
36 x 36	LTFC9060 + Seal Extension Kit *	1473	3.0	4.8	4.5
48 x 48	2 x LTFC9060 *	2946	6.0	9.6	9.0

The Enviropod Littatrap™ has an adjustable bypass. Flow rates listed are for a factor set bypass. Please contact Enviropod for specific bypass requirements.

* Requires an additional seal extension kit for standard installation

THE Enviropod® may be protected by one of the following Canadian, USA or International patent numbers and has other patents pending : 2,810,974, 13/824,376, 15/459,964, 2011302712, 588049

PATENT No.



ENVIROPOD Littatrap™ FC WITH VECTOR INSPECTION PORT SPECIFICATION DRAWING (IMPERIAL UNITS)

DRG No : **LT-GRATED INLET GENERIC** REV : A DATE : 14.12.21

JOB NO :		REV	REVISION DETAIL	DATE
PROJECT :		G	REDRAWN	14.12.21
		H	VP OPTIONAL	10.01.22
DRN :	R.P.		014.12.21	
CKD :	BVL		14.12.21	