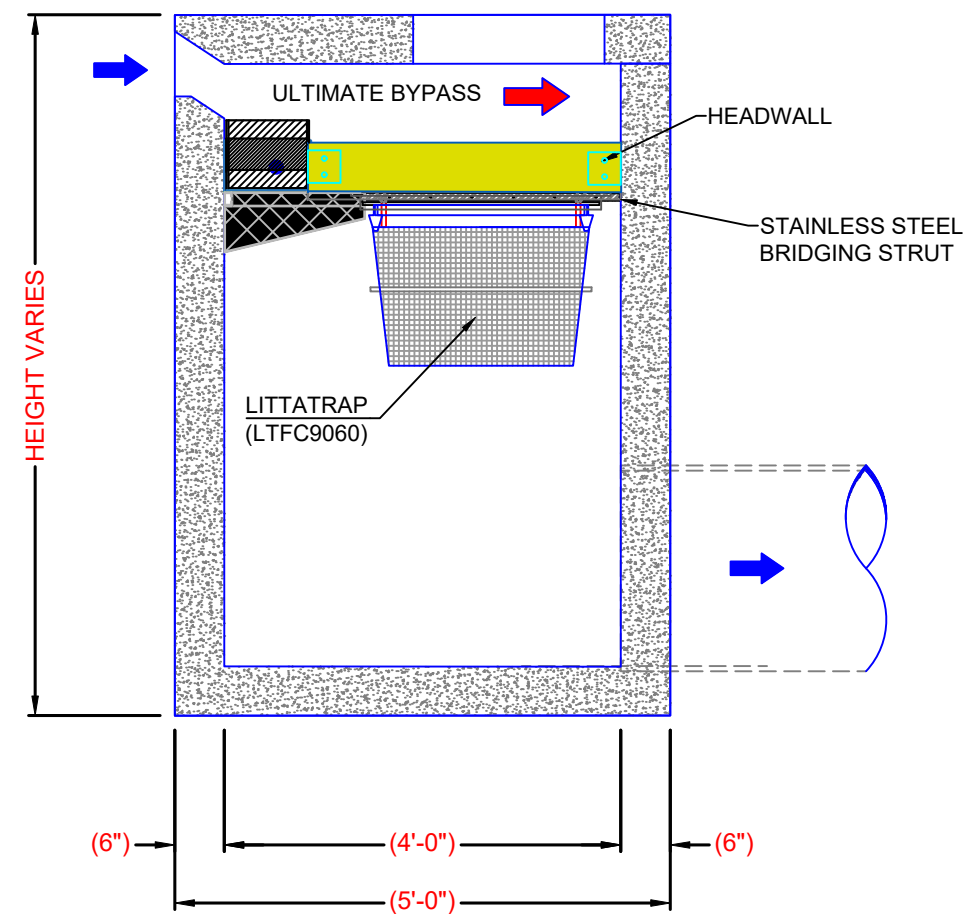
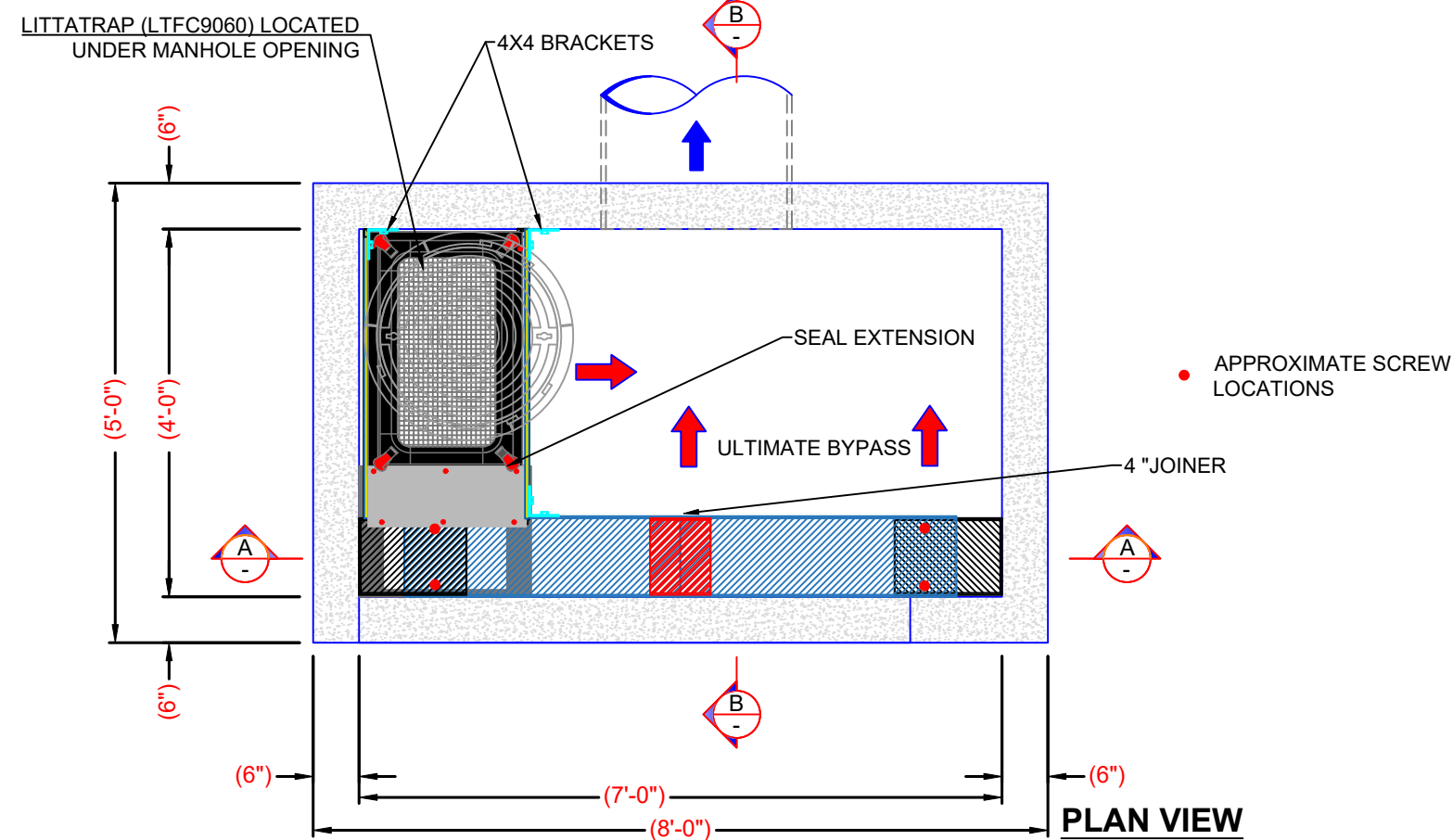


SECTION A-A



SECTION B-B



PLAN VIEW

ENVIROPOD EASY MAINTENANCE MANHOLE ACCESS (EMMA) CURB ENTRY LITTATRAP FLOW AND STORAGE SPECIFICATION					
CURB ENTRY CATCH BASIN LENGTH (FEET)	LittaTrap FC Model Size	MAXIMUM TRASH CAPTURE VOLUME (MTCV)	DESIGN FLOW RATE (50% MTCV) CFS	CHANNEL MAX FLOW RATE CFS	ULTIMATE BYPASS (200% SAFETY FACTOR) CFS
7'	LTFC9060	3.0	4.8	2.1	12.08

The Enviropod LittaTrap™ has an adjustable bypass. Flow rates listed are for a factor set bypass. Please contact Enviropod for specific bypass requirements.

THE DESIGN AND INFORMATION SHOWN ON THIS DRAWING IS PROVIDED AS A SERVICE TO THE PROJECT OWNER, ENGINEER AND CONTRACTOR BY ENVIROPOD. NEITHER THIS DRAWING, NOR ANY PART THEREOF, MAY BE USED, REPRODUCED OR MODIFIED IN ANY MANNER WITHOUT THE PRIOR WRITTEN CONSENT OF ENVIROPOD. FAILURE TO COMPLY IS DONE AT THE USER'S OWN RISK AND IMBRIUM EXPRESSLY DISCLAIMS ANY LIABILITY OR RESPONSIBILITY FOR SUCH USE. IF DISCREPANCIES BETWEEN THE SUPPLIED INFORMATION UPON WHICH THE DRAWING IS BASED AND ACTUAL FIELD CONDITIONS ARE ENCOUNTERED AS SITE WORK PROGRESSES, THESE DISCREPANCIES MUST BE REPORTED TO IMBRIUM IMMEDIATELY FOR RE-EVALUATION OF THE DESIGN. ENVIROPOD ACCEPTS NO LIABILITY FOR DESIGNS BASED ON MISSING, INCOMPLETE OR INACCURATE INFORMATION SUPPLIED BY OTHERS.

PATENT No.

THE Enviropod® may be protected by one of the following Canadian, USA or International patent numbers and has other patents pending : 2,810,974, 13/824,376, 15/459,964, 2011302712, 588049



ENVIROPOD LittaTrap™
CURB ENTRY APPLICATION
EASY MAINTENANCE MANHOLE (EMMA)
7' GENERAL ARRANGEMENT

DRG No : USA-CURB-EMMA REV : C DATE : 03/03/23

JOB NO :	\$405291	REV	REVISION DETAIL	DATE
PROJECT :	CITY OF SANTEE FULL TRASH CAPTURE RETROFIT PROJECT	A	FIRST ISSUE	08/23/21
		B	ADDED DETAIL	12/14/21
		C	FIBERGLASS	03/03/23
DRN :	R.P.	08/23/21		
CKD :	M.H.	08/23/21		