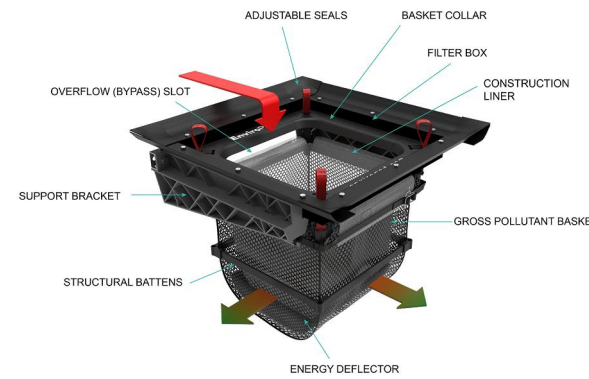
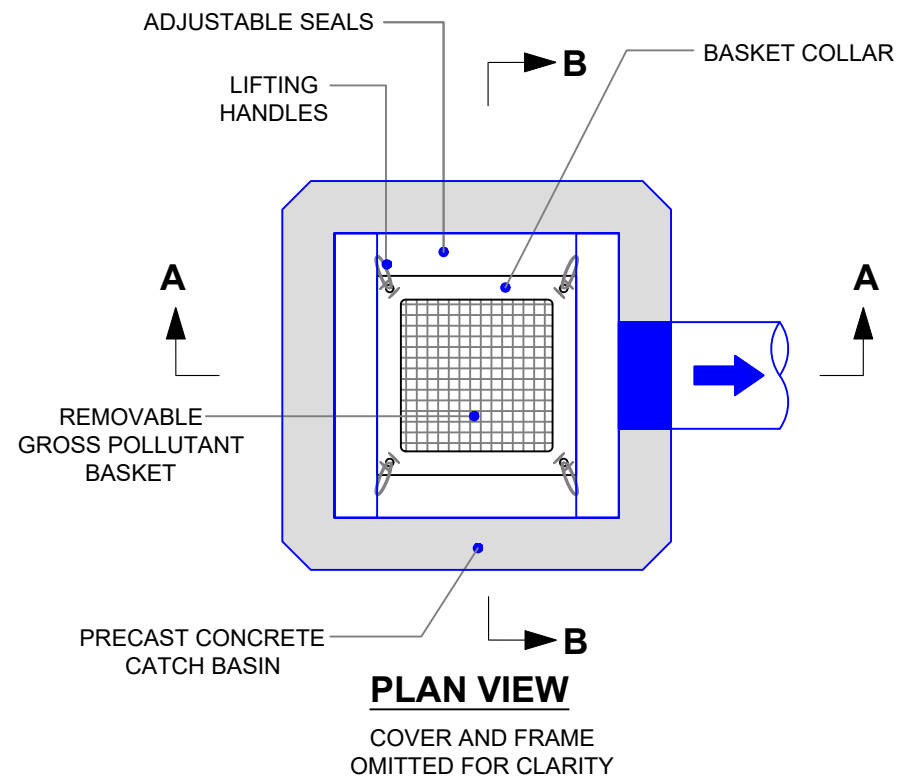


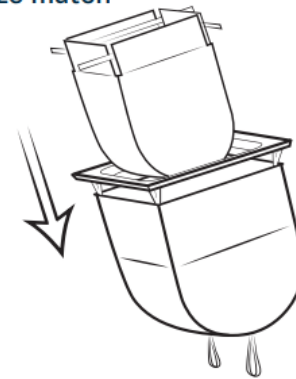
LittaTrap™ BY ENVIROPOD CANADA LTD
CONTACT : BARRY IRWIN
MOBILE : (437) 214-5419
USA / CANADA : Toll Free : (877) 651-0566
EMAIL : barryi@enviropod.com
WEB : www.enviropod.com



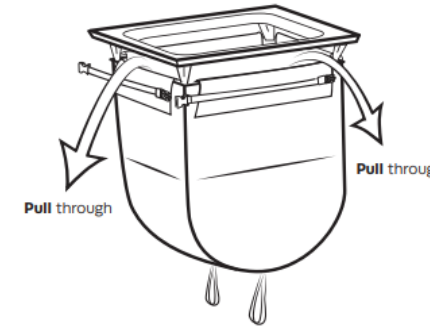
- TO USE THE LITTATRAP AS A CONSTRUCTION BMP:**
1. INSTALL LITTATRAP WITH CONSTRUCTION LINER DURING CONSTRUCTION.
 2. CHECK REGULARLY AND REPLACE CONSTRUCTION LINER AS NEEDED
 3. REMOVE CONSTRUCTION LINER WHEN CONSTRUCTION IS FINISHED FOR POST CONSTRUCTION USE.

INSTALLATION

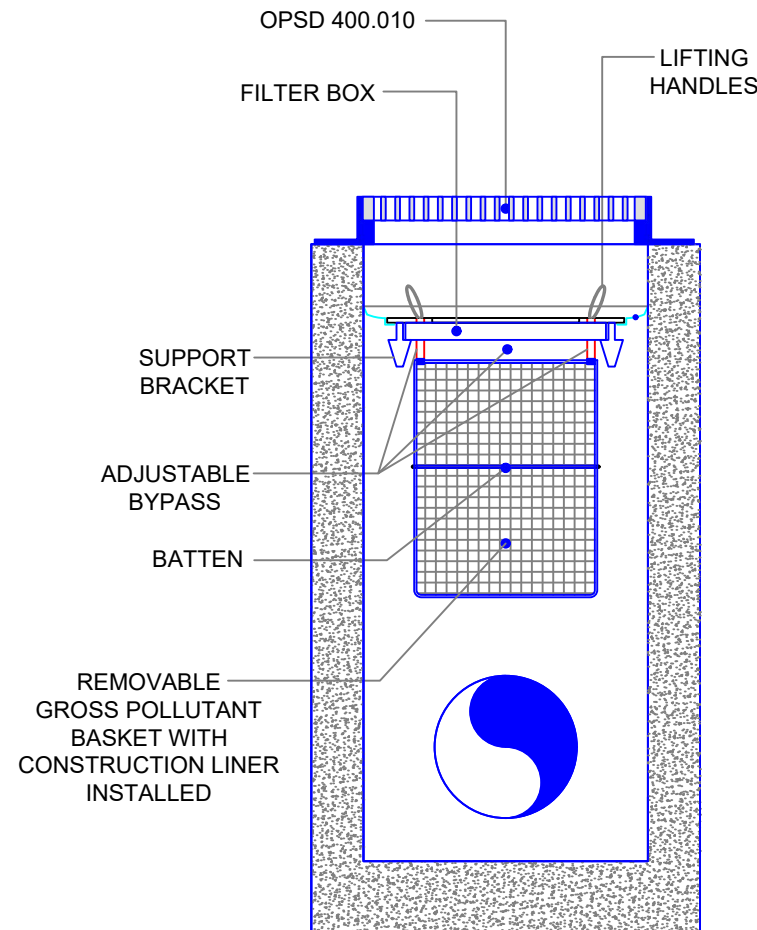
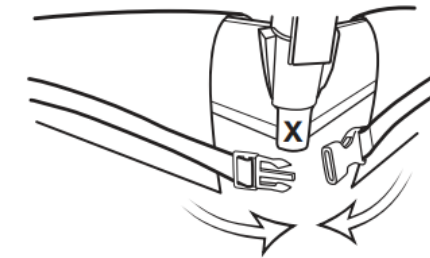
- 1 Insert LinerBag**
Check LittaTrap & LinerBag size match



- 2 Pull LinerBag flaps through gap**
Check LinerBag is not stressed in corners and no gaps



- 3 Clip corners**
Position strap below corner posts (X). Clip all four corners



SECTION A-A

| ENVIROPOD LittaTrap™ TRASH CAPTURE FLOW AND STORAGE SPECIFICATION | | | | | |
|--|----------------------|-----------------------------|---|---------------------------------|----------------------------|
| Catch Basin Nominal Dimensions (mm) | LittaTrap Model Size | Screen Area cm ² | Maximum Trash Capture Volume (MCTV) (L) | Design Flow Rate 75% MCTV (L/s) | Standard Bypass Flow (L/s) |
| 450 x 450 | LT4545 | 3880 | 17 | 42 | 55 |
| 600 x 600 | LT6060 | 6250 | 43 | 69 | 88 |
| 900 x 600 | LT9060 | 9500 | 81 | 102 | 124 |

Notes:

Standard Bypass based on factory set bypass dimensions.
Other catch basin sizes are possible, please contact us for more detail.

THE Enviropod® may be protected by one of the following Canadian, USA or International patent numbers and has other patents pending :
2,810,974, 13/824,376, 15/459,964, 2011302712, 588049

PATENT No.



ENVIROPOD CANADA
600mmx600mm LITTATRAP WITH
CONSTRUCTION LINER
GENERAL ARRANGEMENT

DRG No : **CAN-LT-SPEC-CONST** REV : E DATE : 05/31/23

| | | | | |
|-----------|------|----------|-----------------|--------------|
| JOB NO : | | REV | REVISION DETAIL | DATE |
| PROJECT : | | A | FIRST ISSUE | 08/12/21 |
| | | B | IMAGE EDITS | 07/03/22 |
| | | C | TABLE EDITS | 10/18/22 |
| DRN : | R.P. | 08/12/21 | D | CONSTRUCTION |
| CKD : | BVL | 08/12/21 | E | TITLE BLOCK |