

# Project Profile

## The City of Barrie Waterfront Hotspot Targeting Project



The City of Barrie is a city in Southern Ontario, Canada, about 90 kilometres north of Toronto. The city is within Simcoe County and located along the shores of Kempenfelt Bay, the western arm of Lake Simcoe.

At 722 square kilometres, Lake Simcoe is Ontario's fourth largest lake and is home to over 50 species of fish. Lake Simcoe also provides safe drinking water to seven municipalities, so it is a critical resource to protect.

Enviropod Canada has been working with the City of Barrie since 2019 when we installed a single LittaTrap as a pilot study to understand the nature of litter loading in pedestrian areas in the downtown area. By placing one LittaTrap unit outside a pedestrian hotspot on Dunlop Street, the trial identified patterns such as the busiest months and types of litter discarded, and monitored the effect of snow melt on the unit.

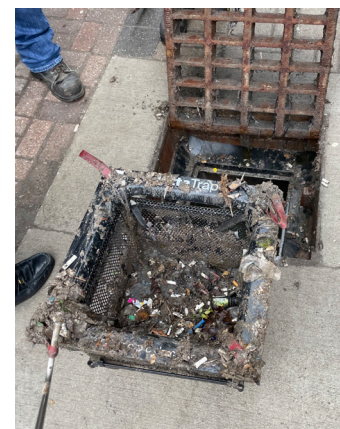
With the success of the pilot, a further 112 LittaTraps were rolled out in 2021 to be installed in high pedestrian and waterfront litter hotspot locations in downtown City of Barrie. The LittaTraps were retrofitted to existing Catch Basins. The LittaTrap product is designed to be retrofitted into existing drainage infrastructure, so the standard product was able to be successfully fitted to all the proposed Catch Basins without any substantial modifications.

*"City staff are always looking for ways to help protect the environment. For our team that means looking at ways of treating and reducing the impacts of stormwater pollution on water bodies. The new LittaTrap Pilot Program looks to reduce stormwater pollution downtown and we hope to quantify this into 2022. This initiative also helps support building a greener Barrie, one of City Council's goals."*

**Jacob Reid**

Supervisor of Technical & Stormwater Operations at City of Barrie

The LittaTraps will target and capture pollutants larger than 5mm (cigarette butts, plastics, litter, leaves) and a High Flow Bypass is integrated into all LittaTrap baskets to ensure no flooding will occur even if the basket is full. Installing LittaTraps greatly reduces the chance of flooding as litter, leaves and other pollutants are prevented from reaching and blocking the catch basin outlet pipe.

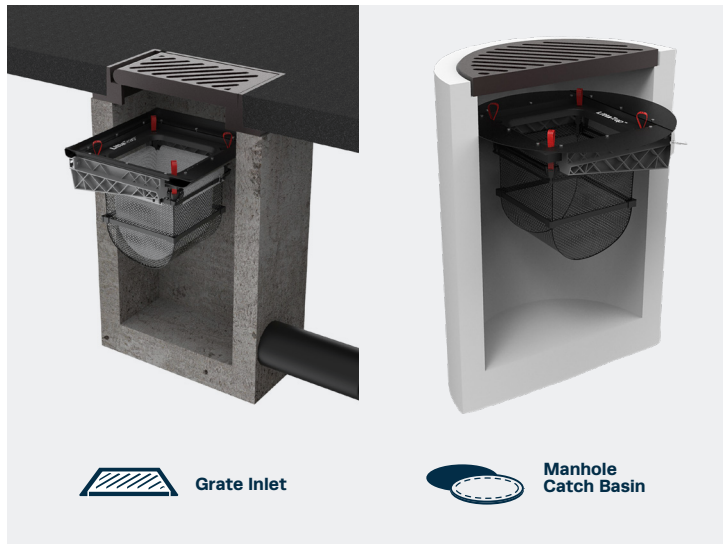


Enviropod Canada utilised specialist Stormwater Service provider Minotaur Stormwater Services Ltd. to provide Traffic Management and installation services to work in with the City's requirements and co-ordinate training with Operations staff.

**These LittaTraps were to be further monitored for pollutants captured and the information will be used to assist in targeting future litter hotspot locations.**

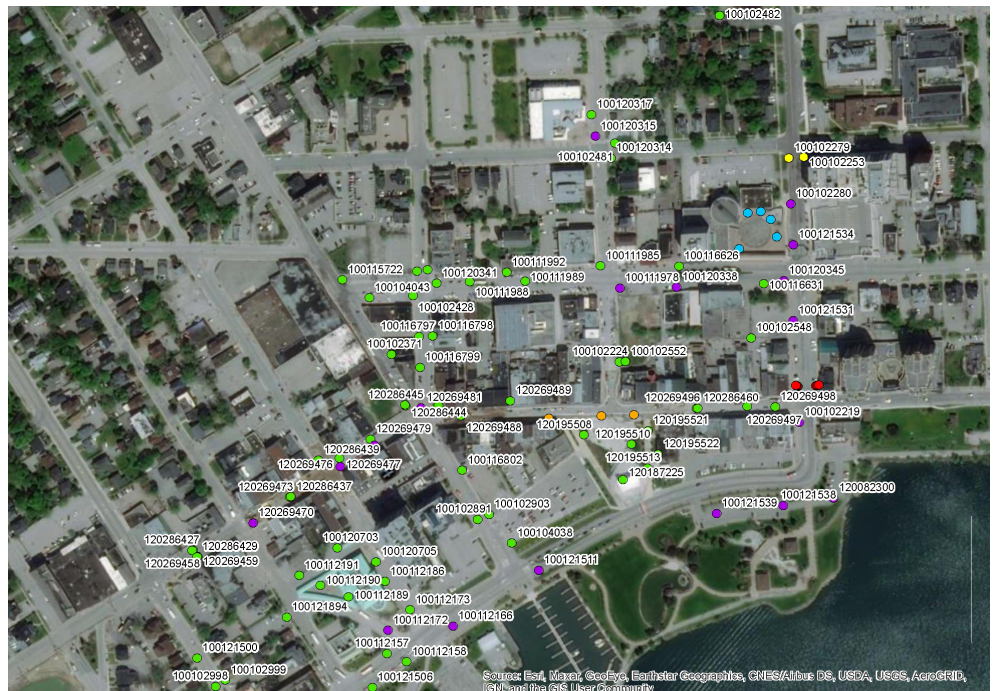
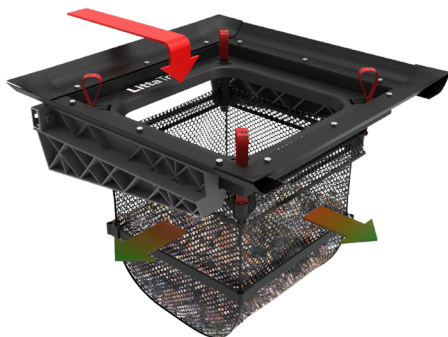
# LITTRAP CONFIGURATION

The Enviropod LittaTrap is low cost, light weight, yet durable device that can work with almost any catch basin design. It is backed by an 8-year warranty and is an independently tested and reviewed technology with over 50,000 installs across the globe.



## BENEFITS

- » Modular and adjustable design
- » Fast installation
- » Large capacity
- » Easy maintenance
- » No confined space entry
- » Full access
- » High flow



Map of installed LittaTraps, Downtown Barrie